

# Swim-Through Grotto with SHEER WATERFALL

by Ron Derven

**THIS MARLBORO TOWNSHIP**, Chester County, Pa., pool and spa with swim-through grotto, sheer waterfall, swim-up bar with tiled stools, pool house and 17-foot slide won a Gold Medal in NESPA's Outstanding Achievement Awards program in 2013 in the category of water features.

## BUILDER

The builder of the project was Ted's Pools, Newtown Square, Pa., which has been in business for 35 years in the Philadelphia suburbs and in the northern Delaware area. The company was started by Ted Tretiak, a salesperson for Anthony Pools. About eight years ago, Peter Fineberg joined the company and over the next few years purchased it from Tretiak. Tretiak, however, remains a key part of the company and continues to work closely with Fineberg.

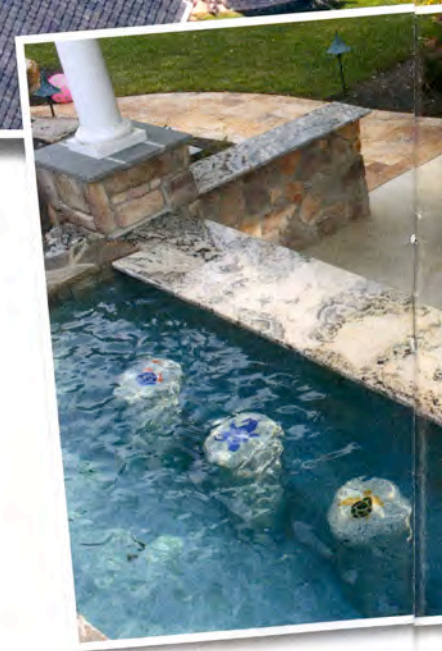
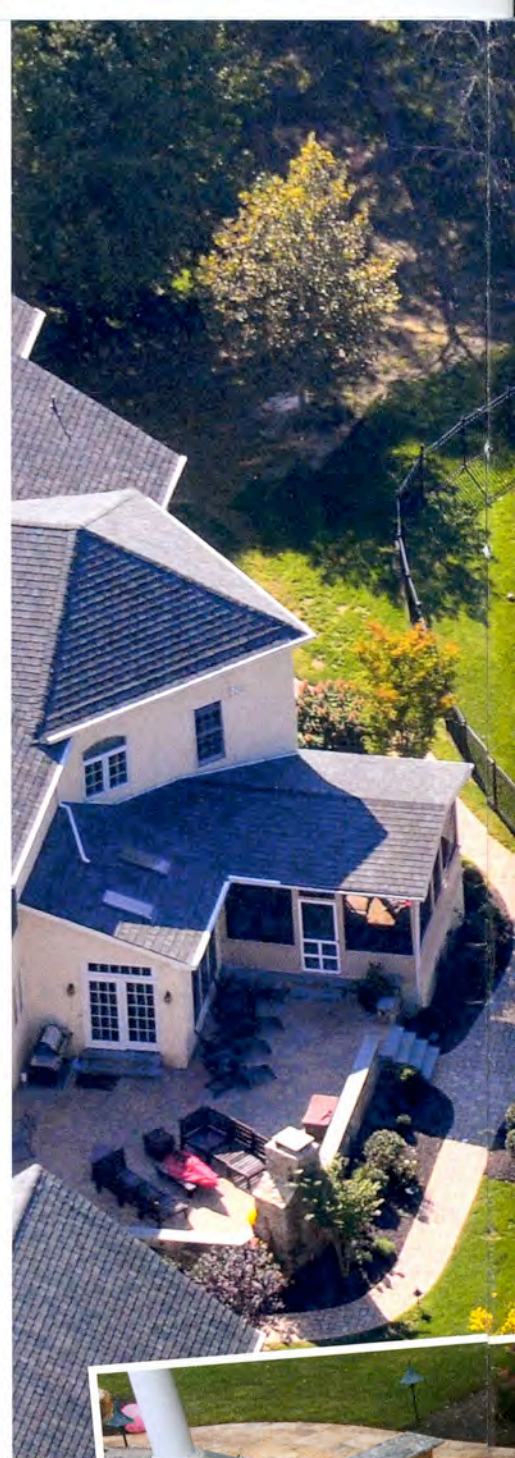
The company, which builds and services pools, constructs about 35 to 45 custom gunite pools a year. It does not have a retail store. Fineberg is a gold member of Genesis 3, a pool and spa education system, and all employees of the company participate in the Northeast Spa & Pool Association's (NESPA) educational programming. The company brings all employees to the Pool & Spa Show in Atlantic City each year for a full schedule of educational courses, and it stresses APSP certifications for its employees. Fineberg noted that in all of the years he has been attending the Pool & Spa Show in Atlantic City, the 2014 show was the best ever from an educational standpoint.

## PROJECT PARAMETERS

This project's client, according to Fineberg, drove past Ted's Pools every day on his way to work. One morning about 8 a.m., he stopped by, knocked on the door and told Fineberg that he was interested in having a pool built. The client and his wife have four young children, and what emerged from discussions was a delightful pool and spa that contained multiple accessory features to keep every family member happy all summer long.

The gunite free form pool is about 1,100 square feet, and the pool side closest to the house offers a beach entry and a raised stone spa with spillover clad in Lightstream glass tiles. Most striking is the large swim-through grotto, which has a six-foot sheer descent waterfall that acts as a dramatic water curtain at the entry of the 12-foot long structure. The pool features Pentair pumps, filtration and salt systems and a ClearWater Technology ozone system. The pool is completely automated with a Pentair IntelliTouch system.

As swimmers swim through the grotto, they arrive at a swim-up bar that has four Pebble Tec finished stools featuring favorite mosaic aquatic animals such as a seahorse, starfish and turtle. A beautiful marble





bar with an enclosed bar is in the back; next to it is the raised spa, sundeck with LED lighting, foam jets and two pairs of mini jets.

“Everything is Pebble Tec Pebble Sheen pool finish with the beach entry being one of the white patterns in the line and the pool itself a different shade of white. There is Lightstream accent tile at all of the steps and benches in addition to the spa spillover. The entire pool coping is Pennsylvania field stone with a travertine deck around the entire project,” said Fineberg.

Atop the grotto is a custom Inter-Fab Build-Your-Own slide with two Fire-by-Design firepots, landscaping and stonework. There are large stone slab steps that go to the top of the grotto and the 17-foot slide. Fineberg said that the gunite grotto had a very tight steel schedule because not only was it supporting its own weight, but between 20 to 25 tons of boulders. The grotto structure was painted to look like real stone.

The 450-square-foot pool house is constructed of poured concrete footers with poured concrete slab, wood framing, stone cladding on the bottom and stucco near the top. Inside, all floors are tiled and the walls are sheetrocked. The rooms are large and all ceilings are vaulted. There is a bathroom in the

pool house as well as an air conditioned area. The house has a broad overhang for shade. Fineberg said that the family uses the pool house all of the time as well as the swim-up bar, which features three large-screen outdoor TVs with a fourth in the pool house itself.

The project also features an elegant outdoor stone kitchen with barbecue. Built into the deck are an S.R. Smith diving board, S.R. Smith basketball system and S.R. Smith volleyball system.

## CHALLENGES

Ted's Pools typically builds a pool in about two months. This one took five months and was completed over a fall-spring time period. The property where the pool and spa is located is about five-to-six acres and extremely flat. Fineberg said that the only real challenge on this job was the continuous dewatering of the site. As soon as excavation began, dewatering equipment was put in use. |

### PRODUCTS USED

Ted's Pools used a variety of products on this project.

- ClearWater Technology ozone system
- Fire-by-Design firepots
- Inter-Fab Build-Your-Own slide
- Lightstream glass tiles
- Lynx outdoor appliances
- Meyco cover
- Natural stone by Rolling Rock Stone
- Next Step Products LED lighting
- Pebble Tec pool finish
- Pentair products including Max-E-Therm High Performance heater, IntellePro variable-speed pumps, and IntellaChor Salt System and IntelliTouch control systems
- S.R. Smith diving board and volleyball and basketball systems



## It's Your Time

For more than 25 years, the Leisure Time® brand has been the premier name in spa water care. During that time, spas have become more luxurious and consumers more sophisticated. To continue earning our position as the leader in spa water care, Leisure Time® spa continually improves its product line, the program and the packaging that elegantly wraps up years of innovation. Plus, Leisure Time® spa has developed Simple Spa Care®, an easy-to-follow program that allows spa owners to spend more time in their spas and less time maintaining them.

 **LEISURE TIME** [LeisureTimeSpa.com](http://LeisureTimeSpa.com)

Leisure Time®, the Leisure Time logo and Simple Spa Care® are registered trademarks of Arch Chemicals, Inc.  
© 2014 Arch Chemicals, Inc. Arch is now a part of Lonza.